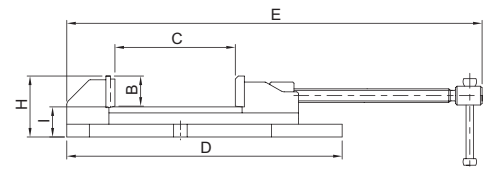
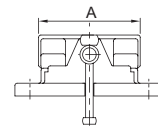
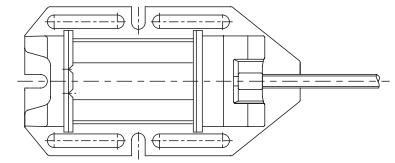


NEW

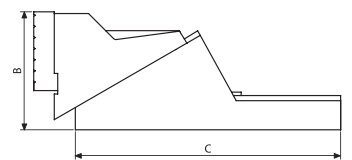
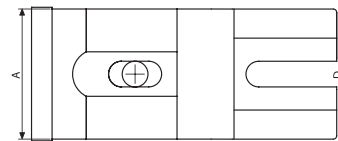
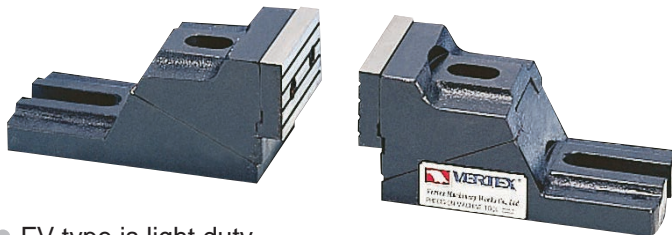


Unit:mm

- Big opened.
- Big clamping capacity.
- With prisma jaw for round workpiece.
- For drilling & milling using.

ORDER NO.	A	B	C OPEN	D	E	H	I	V	G.W. (kgs)	CFT (cm)	CODE NO.
VRV-4	110	32	130	316	471	73	40	5-32	9.8	32.3 x 13.3 x 12.9	1002-320
VRV-5	135	40	160	366	552	81	40	6-40	14.0	32.3 x 13.3 x 12.9	1002-321
VRV-6	160	50	220	447	693	96	45	7-48	25.7	32.3 x 13.3 x 12.9	1002-322

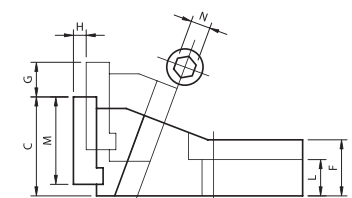
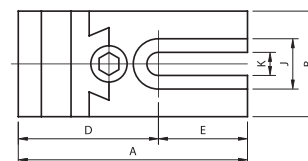
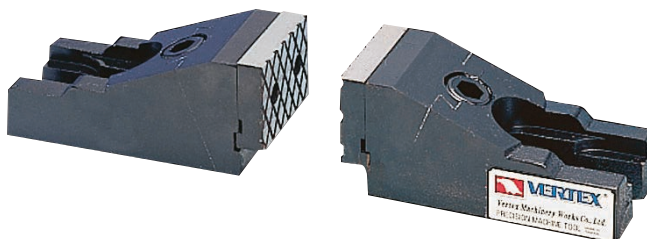
Free Vise



- FV type is light duty.
- Free style clamping.
- Adjustable distance 15mm.

Unit:mm

ORDER NO.	DIMENSION (WxHxL)	CLAMPING CAPACITY (HxL)	ACCESSORIES BOLT SIZE	WEIGHT (kgs/2PCS)	CODE NO.
FV-350	75x67x150mm	140x350mm	M12 x 75L x 2PCS. M12 x 125L x 2PCS	7.5	1002-290
FV-450	100x90x200mm	180x450mm	M12 x 75L x 2PCS. M12 x 125L x 2PCS	14	1002-291
FV-550	125x120x250mm	250x550mm	M16 x 75L x 2PCS. M16 x 125L x 2PCS	23	1002-292



- Free style clamping.
- Heavier duty.
- Adjustable distance 10mm.

Unit:mm

ORDER NO.	A	B	C	D	E	F	G	H	J	K	L	M	N	ACCESSORIES BOLT SIZE	N.W. (kgs)	CODE NO.
SV-62	139	64	59.5	85	54	33.5	21	9	30.5	18	22	52.5	12	M12 x 75L x 4PCS	5.8	1002-293
SV-85	192	86.5	86	115	77	53	24	10	36	18	25.5	59.5	12	M16 x 75L x 4PCS	11	1002-294
SV-125	218	127	84	124	94	51.5	33	18	45.5	20	23.5	73	12	M16 x 75L x 4PCS	21	1002-295