



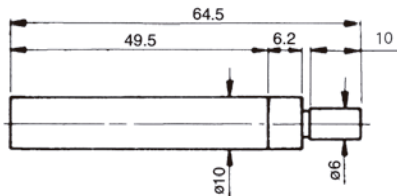
Touch Point Sensor



Edge Finder



VPS-201



This series is a high precision setting device for positioning the accurate center between tool spindle of machine and reference surface of working at low-cost and saving time.
Accuracy : within ± 0.005 mm
Made of tool steel, hardened and ground.
Suitable rotation speed : VPS-201 450 to 600rpm.
VPS-401 600 to 1,000 rpm

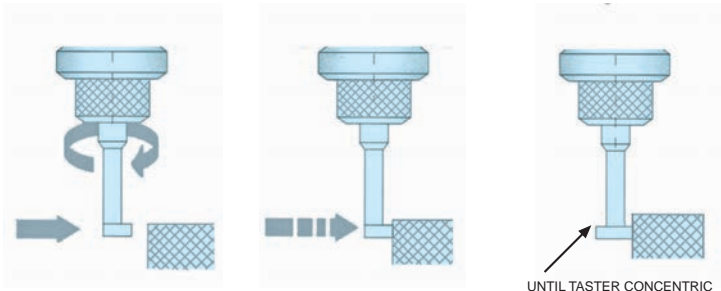


CREAMIC TYPE VPS-201C



MECHANICAL TYPE

ORDER NO.	VPS-201	VPS-201C
WEIGHT (KG)	0.03	0.06
CODE NO.	3402-005	3402-007



TOUCH POINT SENSOR

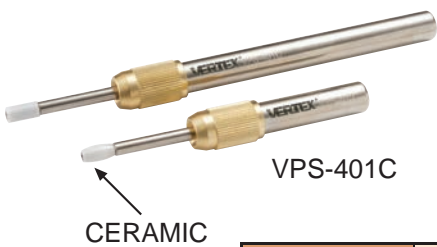


Touch Point Sensor

Deluxe Type



VPS-401



VPS-401C

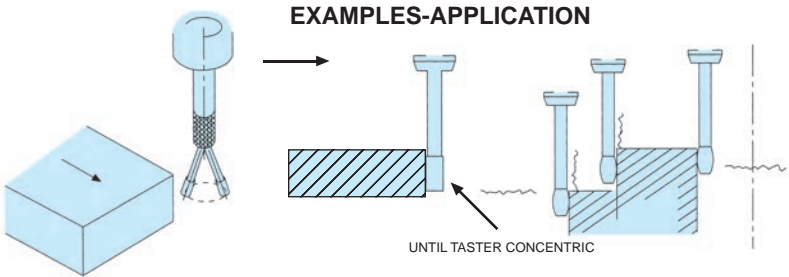
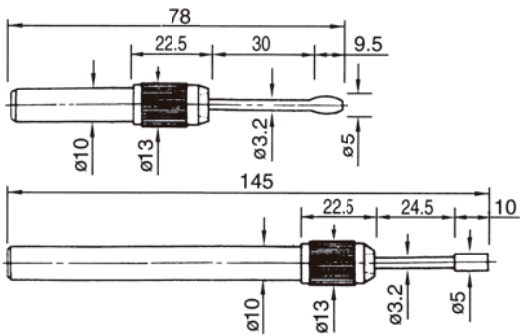
CERAMIC

FEATURES:

- Material: high-carbon steel.
- Accuracy: within ± 0.003 mm
- Hardness: HRC $58^{\circ} \pm 1^{\circ}$
- R.P.M. Within 600-1000
- Suitable for milling machine. Drill machine and boring machine.
- Edge Finder

VPS-401 (2 PCS/SET)
VPS-402A(LONG) SINGLE
VPS-402B(SHORT) SINGLE

ORDER NO.	VPS-401	VPS-401C
PCS/SET	2PCS/SET	2PCS/SET
MATERIAL	STEEL	CERAMIC
WEIGHT (KG)	0.26	0.26
CODE NO.	3402-006	3402-008



EXAMPLES-APPLICATION